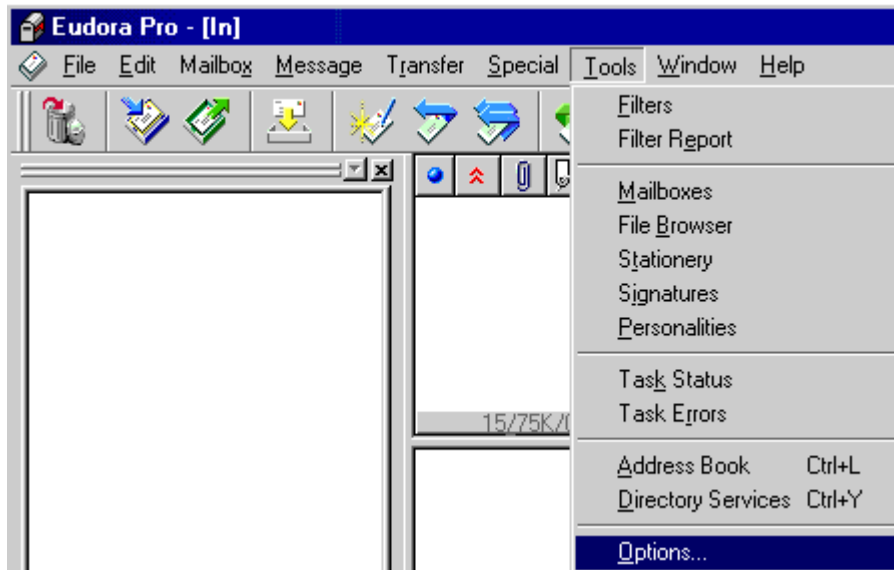
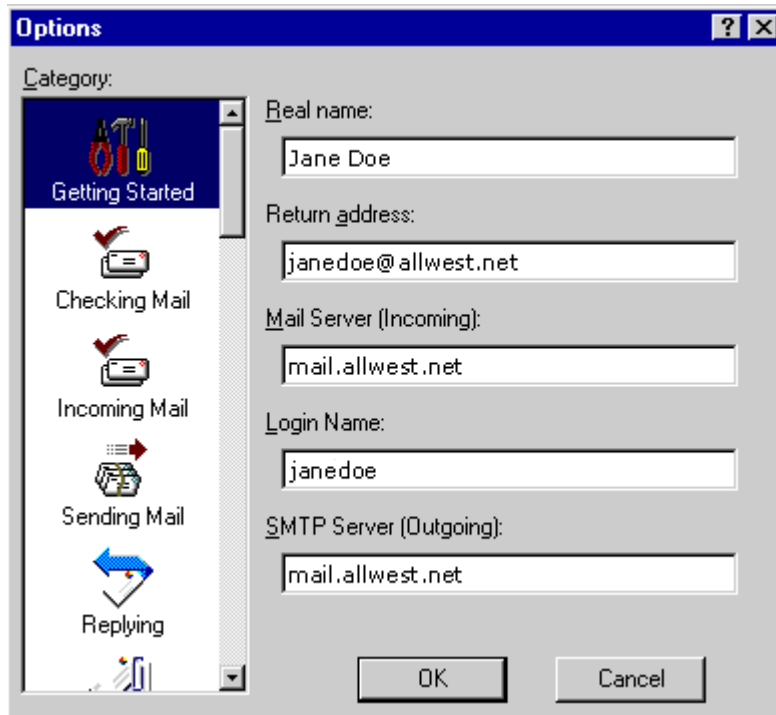


## Setup: Eudora Pro

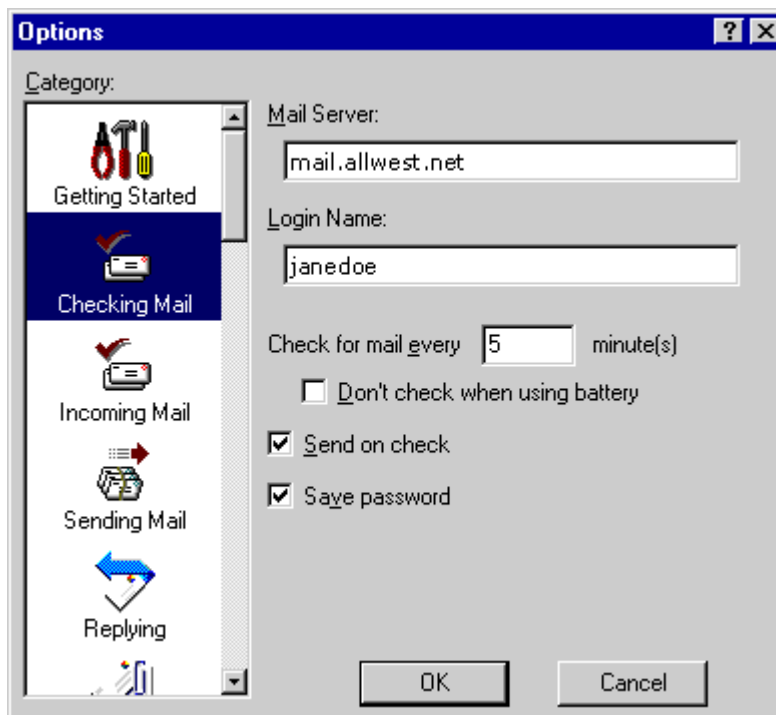
1. Open Eudora Pro by double-clicking on the Eudora Pro icon on your Desktop. Note: If no icon exists locate Eudora Pro in your "Start" menu.
2. Select **Tools > Options...** from the menu bar.



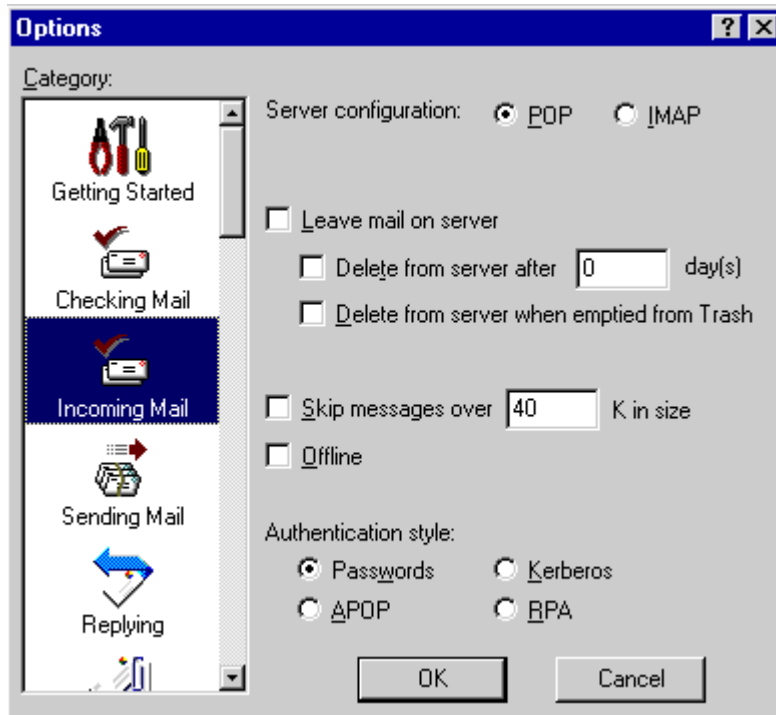
3. Click **Getting Started** (under 'Category:') and fill **Real Name, Return Address, Mail Server, Login Name, SMTP Server** using the screenshot below as an example.



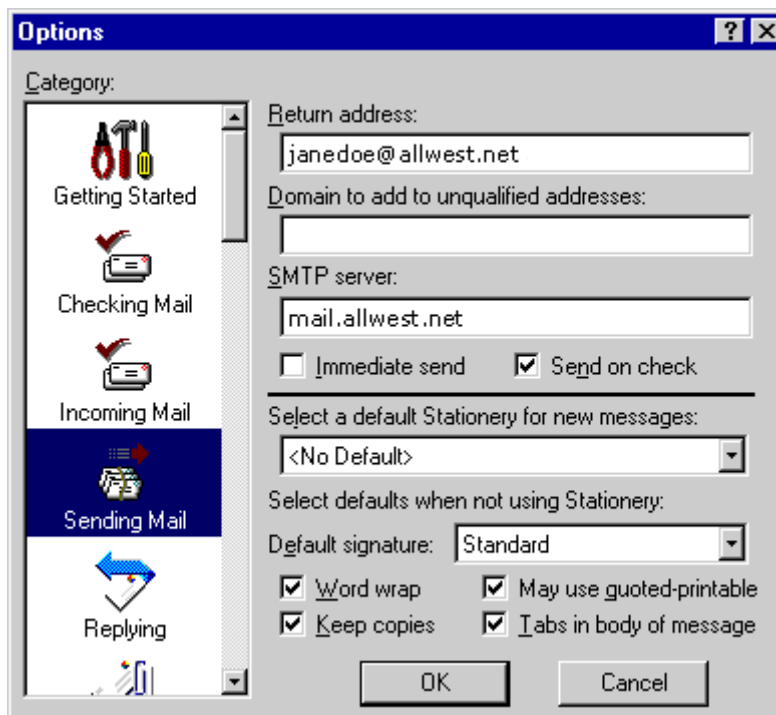
4. Click **Checking Mail** (under 'Category:') and fill in **Mail Server** and **Login Name** using the screenshot below as an example.



5. Click **Incoming Mail** (under 'Category:') and make sure the settings are like the screenshot below.



6. Click **Sending Mail** (under 'Category:') and make sure the settings are like the screenshot below.



7. Finished. Click **OK**.