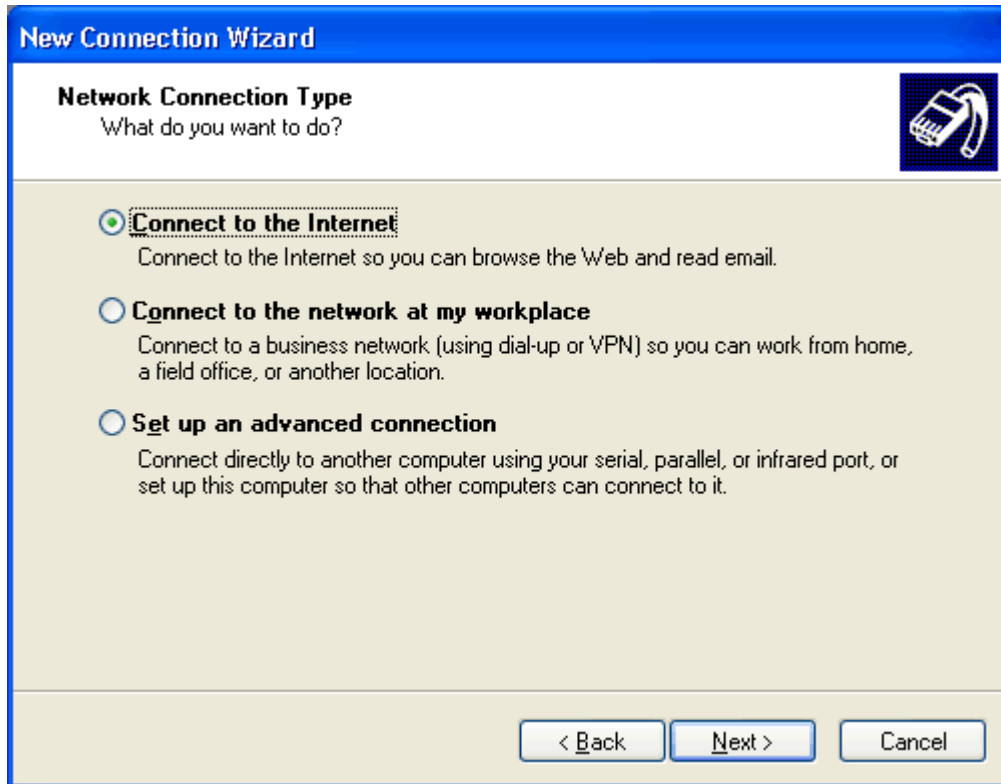


## Dial-up Setup: Windows XP

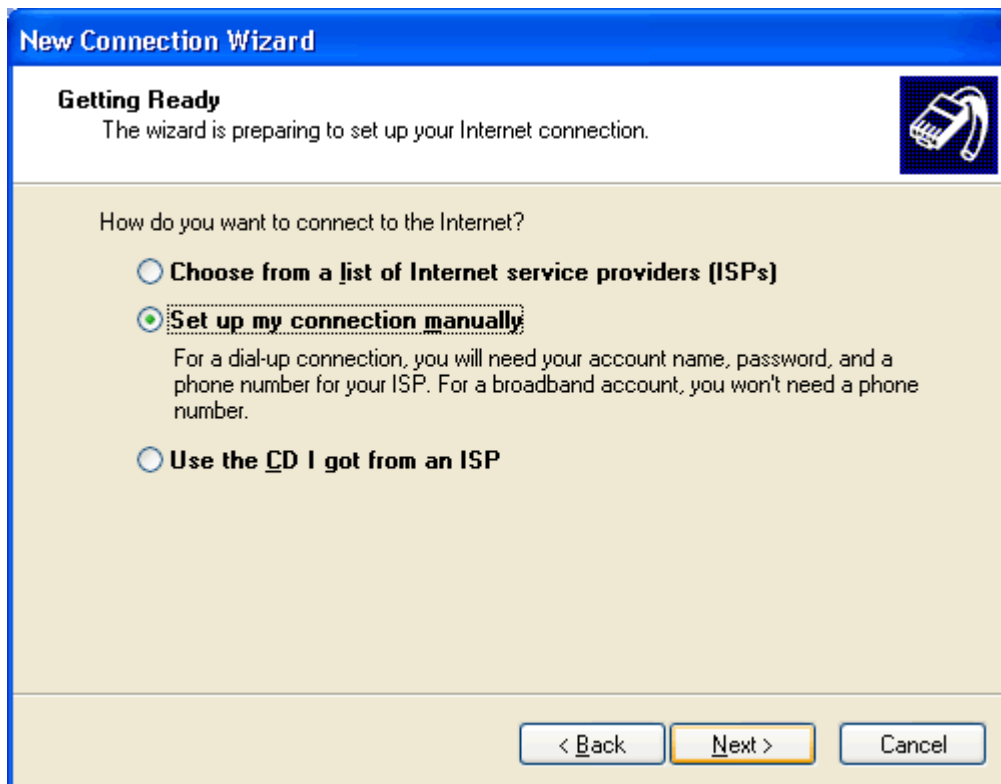
1. To set up your computer for a dialup internet connection you will use the **New Connection Wizard**. To begin the wizard, go to **Start > Control Panel**. Then, double-click on the **Internet Options** icon. Choose the **Connections** tab and click the **Setup...** button.
2. You have now entered the **New Connection Wizard**. Click **Next**.



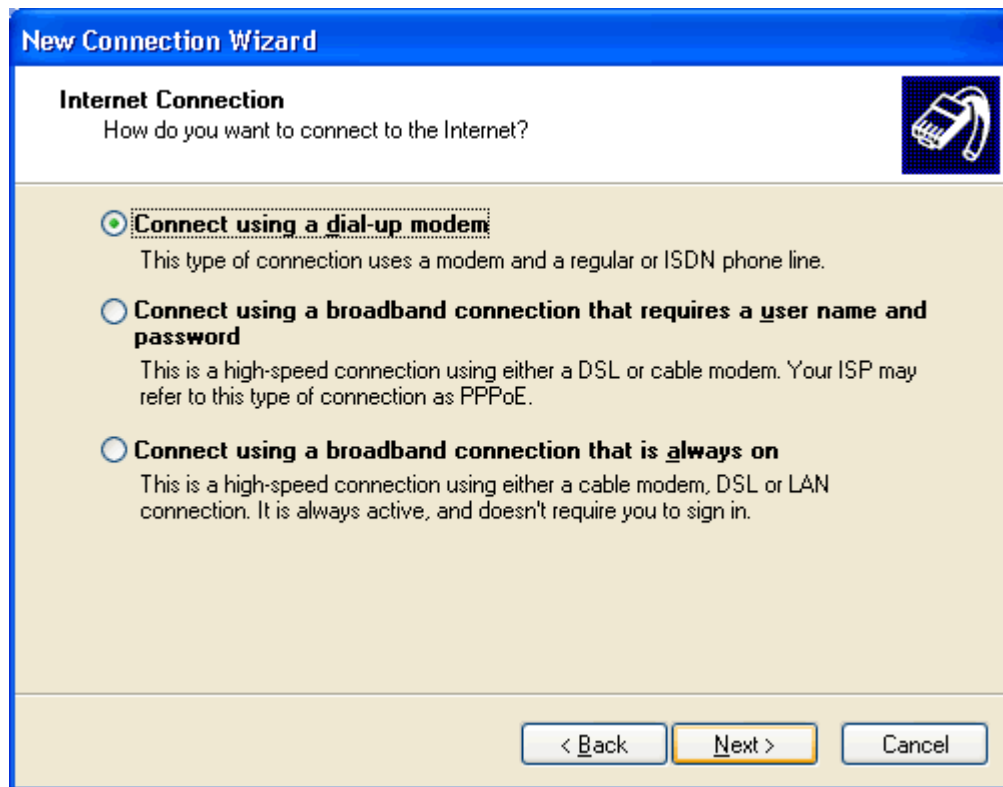
3. Leave the first option selected ('Connect to the Internet'). Click **Next**.



4. Choose the second option ('Set up my connection manually'). Click **Next**.




5. Leave the first option selected ('Connect using a dial-up modem'). Click **Next**.



6. Name your Dial-Up Connection 'allwest.net'. Click **Next**.

**New Connection Wizard**

**Connection Name**  
What is the name of the service that provides your Internet connection?



Type the name of your ISP in the following box.

ISP Name


The name you type here will be the name of the connection you are creating.

< Back   Next >   Cancel

7. Enter the local access phone number for your area. Click **Next**.

**New Connection Wizard**

**Phone Number to Dial**  
What is your ISP's phone number?



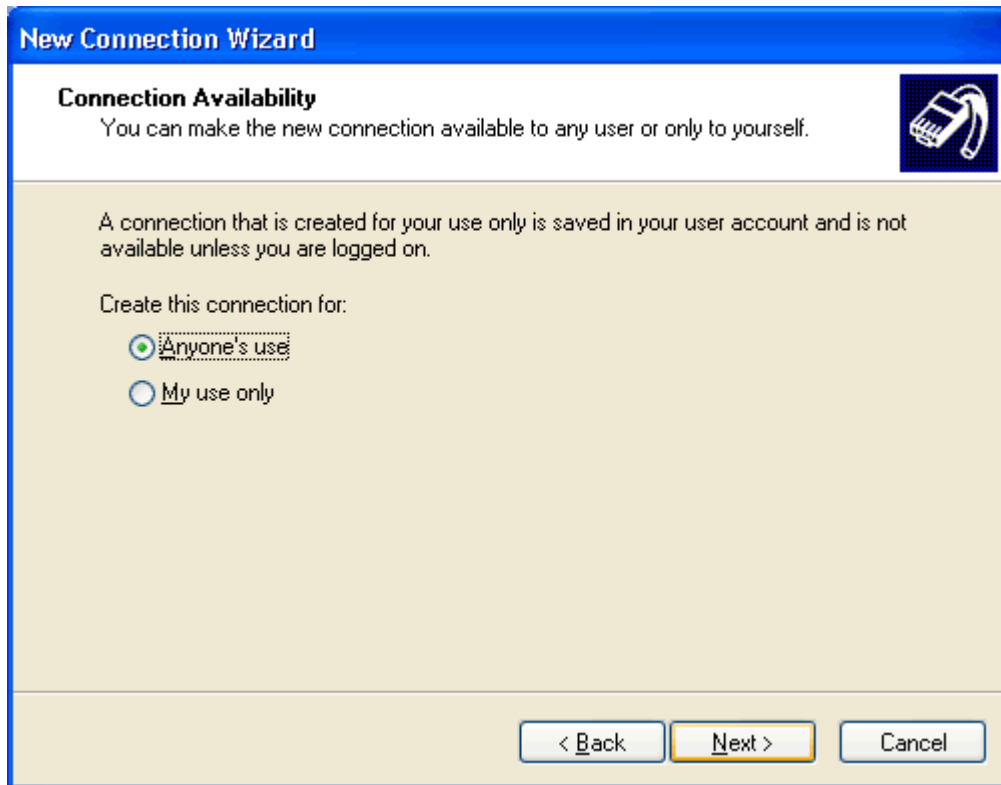
Type the phone number below.

Phone number:

You might need to include a "1" or the area code, or both. If you are not sure you need the extra numbers, dial the phone number on your telephone. If you hear a modem sound, the number dialed is correct.

< Back   Next >   Cancel

8. Leave the first option selected ('Anyone's use'). Click **Next**.



9. Enter the username and password for your account. Be sure to leave 'Turn on Internet Connection Firewall' UN-checked. Click **Next**.

**New Connection Wizard**

**Internet Account Information**  
You will need an account name and password to sign in to your Internet account.

Type an ISP account name and password, then write down this information and store it in a safe place. (If you have forgotten an existing account name or password, contact your ISP.)

User name:

Password:

Confirm password:

Use this account name and password when anyone connects to the Internet from this computer

Make this the default Internet connection

Turn on Internet Connection Firewall for this connection

< Back   Next >   Cancel

10. You have finished setting up your new dial-up connection. Click **Finish**.

**New Connection Wizard**

**Completing the New Connection Wizard**

You have successfully completed the steps needed to create the following connection:

**allwest.net**

- Make this the default connection
- Share with all users of this computer
- Use the same user name & password for everyone

The connection will be saved in the Network Connections folder.

Add a shortcut to this connection to my desktop

To create the connection and close this wizard, click Finish.

< Back   Finish   Cancel

(Note: For help setting up your email client click 'Back', in your browser, to the main internet support page and click on the name of the email client you wish to use.)