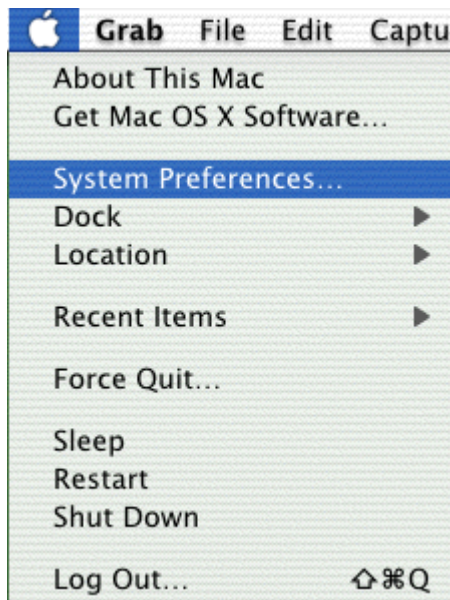


Dial-up Setup: Mac OSX

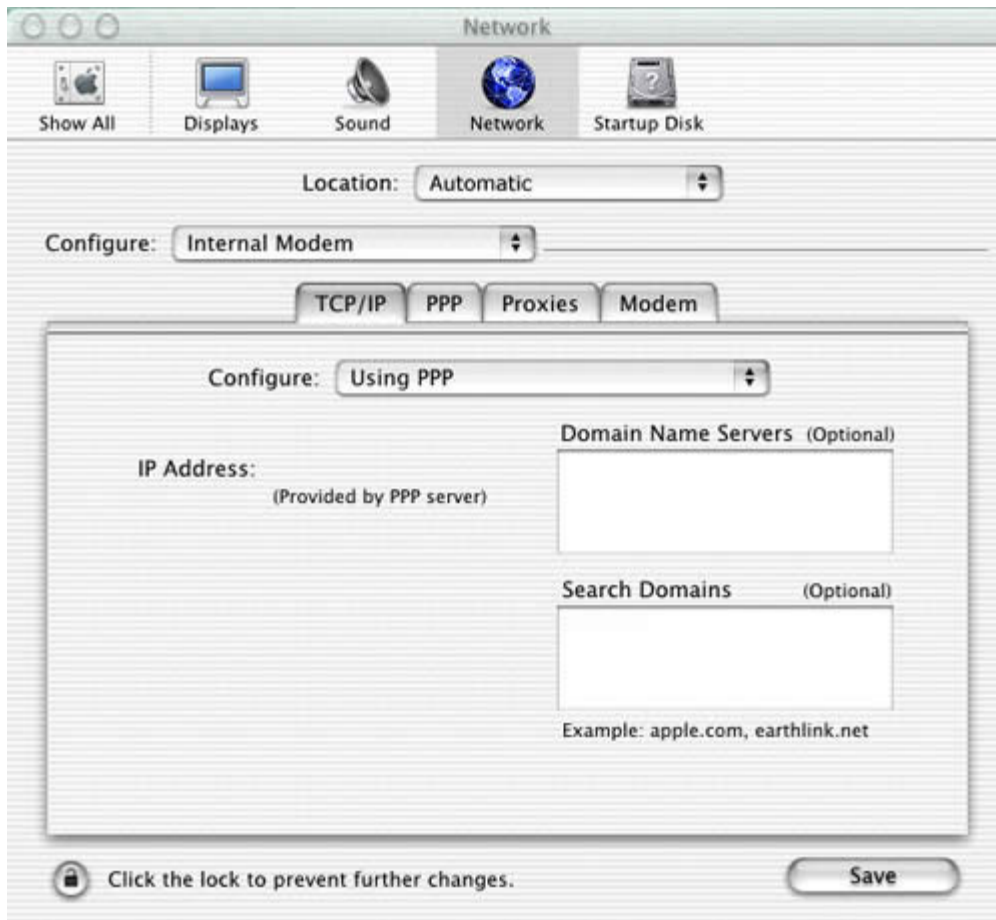
1. Open the **System Preferences** via the apple menu (top left corner of your screen).



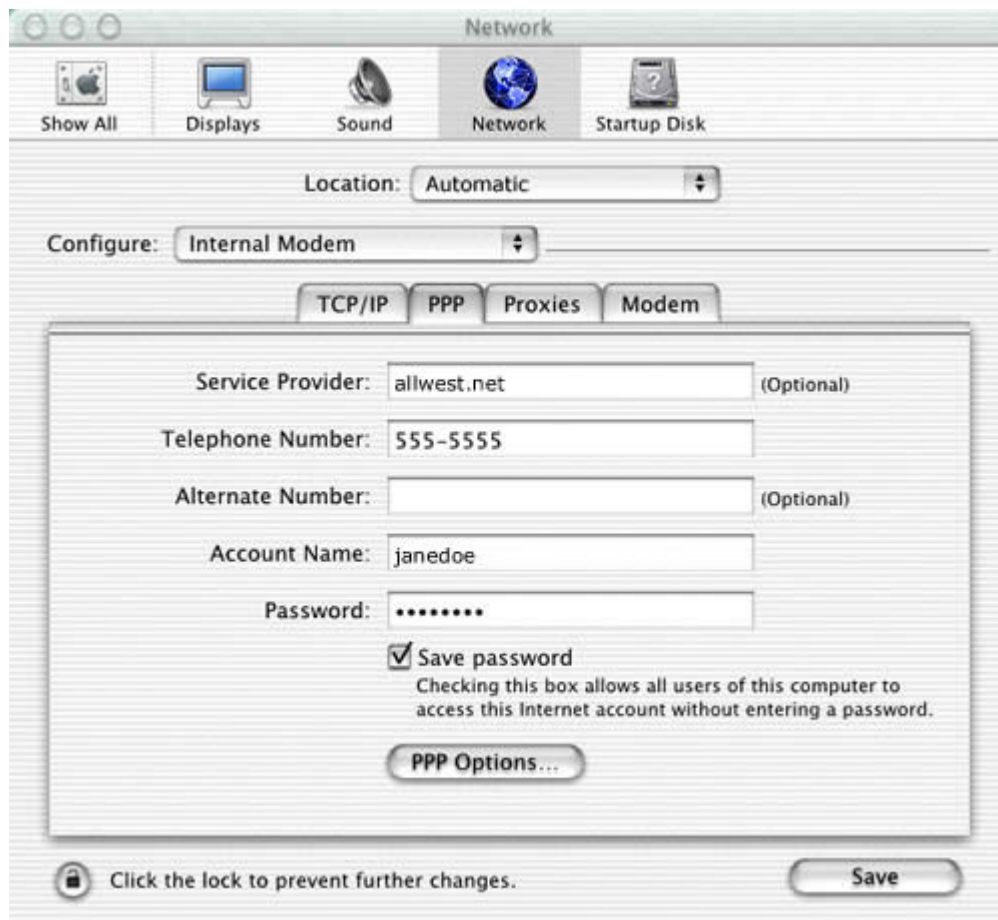
2. Click on **Network**.



3. Leave **Location** set on 'Automatic'. Set the **Configure** option to 'Internal Modem'. Under the **TCP/IP** tab set **Configure** to 'Using PPP'. Click the **PPP** tab.



4. Enter 'allwest.net' for the **Service Provider**. Enter the local access phone number for your area. Set the **Account Name** and **Password** appropriately.



5. You are finished setting up your dial-up connection. Click **Save**.